



FOR IMMEDIATE RELEASE

EDITORIAL CONTACT

Sara Greenberg / LRG Marketing

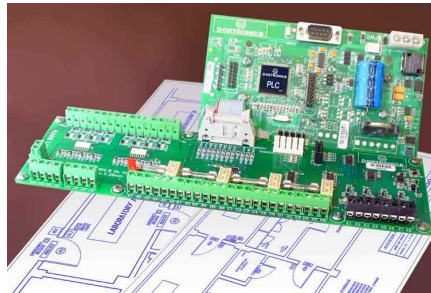
phone: 845-358-1801

fax: 845-358-1899

e-mail: sgreenberg@lrgmarketing.com

Dortronics Introduces 4900 Series Intelligent Interlock Controller.

*PLC-Based Mantrap System Available Off-The-Shelf Or
Customized To Any Application.*



Las Vegas, NV (April 1, 2009) – Dortronics Systems, Inc. makes it easy and cost-effective to configure complex door interlock systems in a mantrap application with its new 4900 Series Intelligent Interlock System, introduced at ISC West. The programmable logic controller (PLC)-based system is factory-programmed with standard interlock configurations or can be customized for almost any operational requirements. Should changes be required after installation, an updated program file can be emailed for download on-site.

Mantrap configurations are common for applications such as casino cash handling, data centers and clean rooms. Mantraps involve two sets of doors that surround a small space at the entrance of a facility. Typically, the first set of doors must be locked behind someone entering the facility before the second set of doors is opened, thus offering added security and the ability to lock all doors in case of an alarm to trap a suspect inside the space.

“Configuring mantrap applications does not have to be complex for installers,” said Bryan Sanderford, National Sales Manager, Dortronics Systems, Inc. “Our 4900 series Intelligent Interlock System makes creation of a mantrap application as easy as connecting the inputs and the outputs. Wiring connections are simple and logical, and lighted status indicators make troubleshooting simple for the field installer.”

Dortronics' 4900 Series provides scalable hardware. The PLC controller will handle 33 inputs and 33 outputs and can be expanded to accommodate in excess of 128 inputs and 128 outputs. The modular design of the 4900 Series Intelligent Interlock Processor enables control of any sized door interlock project. Standard I/O modules and expansion relay modules provide cost-effective configurations for most mantrap designs. Additional standard and special-order modules can be combined to provide custom solutions.

Each 4900 Series I/O board can control up to four normally locked doors, eight normally unlocked doors or a mix of locked and unlocked doors utilizing the 8 available inputs. Each board provides 8 inputs (typically used for the door switch and request-to-exit switch for each door); 4 DPDT form C Relays providing 8 dry contact outputs (4 fused and 4 unfused) for switching lock power, traffic lights, sounders, cameras, or signaling a central console; 4 open collector outputs that can be used to drive signal lights directly or may be used to operate up to four additional relays if needed; 4 voltage out terminals and 4 common returns for powering locks, lights or external circuits.

The 4900 Series Controller provides easy expansion for a virtually unlimited number of controlled portals, and can provide timed responses for the sequencing of peripheral equipment, such as blowers, lighting or decontamination.

Dortronics Systems, Inc. designed the 4900 Series to be compatible with any access control system or standard manual switch controls. It can be used with any electrically operated locking devices to control automatic door operators, air misting/purge systems, LEDs for traffic indicators and monitoring controls.

“Our standard configurations provide economical solutions and immediate off-the-shelf availability, while our in-house programmers can customize an interlock solution for any application,” said Sanderford. “Our intelligent processor allows inputs and outputs to be easily re-configured to meet the specific needs of the customer and the application.”

For more information on Dortronics’ extensive line of access control products call toll free 1-800-906-0137, e-mail sales@dortronics.com or visit their web site www.dortronics.com.

About Dortronics Systems, Inc.

Dortronics Systems, Inc. is the industry's "quick-ship" supplier of standard and custom finish access control products including electromagnetic locks; electronic strikes; power supplies; key switch controls; pushbutton controls; digital keypad controls; delayed egress controls; alarm annunciation controls; high security locks; egress bar door releases; emergency pull stations; and access control applications for smaller installations.

XXX

***EDITORS’ NOTE:** All photos are available upon request by emailing Sara Greenberg at LRG Marketing Communications sgreenberg@lrgmarketing.com.